



SCHOOL OF ARCTIC AND SUBARCTIC STUDIES

LABRADOR CAMPUS OF MEMORIAL UNIVERSITY

Meeting of the Academic Council

January 25th, 2022



Present:

ASHLEE CUNSOLO (Chair; Dean, School of Arctic and Subarctic Studies)

AMY HUDSON (Governance and Strategic Planning Lead, NunatuKavut Community Council)

KANANI DAVIS (Chief Executive Officer, Mamu Tshishkutamashutau Innu Education)

JODIE LANE (Director of Education, Nunatsiavut Government)

ARN KEELING (Head of Dept. of Geography, Cross-Appointed with SASS)

SCOTT NEILSEN (Assistant Professor, School of Arctic and Subarctic Studies & Department of Archaeology)

LISA RANKIN (Professor of Archaeology, Cross-Appointed with SASS)

SYLVIA MOORE (Assistant Professor, School of Arctic and Subarctic Studies & Department of Education)

NATHANIEL POLLOCK (Research Associate & Adjunct Professor, SASS)

ALEX SAWATZKY (Secretary; Special Projects Manager & Adjunct Professor, SASS)

Regrets:

THOMAS PIGGOTT (Medical Officer of Health; Adjunct Professor, SASS)

Guest:

GARRY BEST (Senior Labrador Advisor, SASS)



APPROVALS & UPDATES



CAMPUS ANNOUNCEMENT



- LOTS OF EXCITEMENT IN LABRADOR, THROUGHOUT MEMORIAL, & IN MEDIA
- ON TRACK SO FAR WITH RENOVATIONS TO TRANSITION BUILDING
- MOVING TIMELINE:



ACADEMIC PROGRAMMING

ENGINEERING I IN LABRADOR

* APPLICATION DEADLINE: MARCH 1

- AGREEMENT WITH CNA: STUDENTS CAN TAKE NON-ENGINEERING COURSES AT THE COLLEGE



- IN THE PROCESS OF HIRING A LABORATORY COORDINATOR

- DISCUSSING CERTIFICATE OPTIONS



STUDENT ENGAGEMENT

- OPEN HOUSES HAVE BEEN WELL-RECEIVED
- POTENTIAL SUMMER ENRICHMENT PROGRAM TO CONNECT CURRENT & FUTURE STUDENTS
- POTENTIAL MENTORSHIP PROGRAM WITH ENGINEERS FROM LABRADOR



NURSING IN LABRADOR



* APPLICATION DEADLINE: JANUARY 20

- LOOKING TO HIRE A COORDINATOR/ADMINISTRATIVE POSITION BASED IN LABRADOR
- OPEN HOUSES HAVE BEEN WELL-RECEIVED

INDIGENOUS BACHELOR OF SOCIAL WORK

- SCHOOL OF SOCIAL WORK WANTS TO DEVELOP AN INDIGENOUS BSW
- INNU PROGRAM WOULD BE FIRST COHORT



- OVER TIME, DEVELOP A FULL INDIGENOUS AND NORTHERN SOCIAL WORK PROGRAM

ACADEMIC PROGRAMMING

GRADUATE PROGRAMS IN ARCTIC & SUBARCTIC FUTURES

PROPOSED COURSES

SASS 6000: LEARNING LABRADOR

GROUNDING STUDENTS IN LABRADOR CONTEXT & HISTORY

INDIGENOUS COMMUNITY AND GOVERNMENT LEADERSHIP IN WHAT IS TAUGHT, AND HOW

SASS 6005: SYSTEMS FOR HEALTH AND WELLNESS IN THE CIRCUMPOLAR NORTH

UNDERSTAND HOW DIFFERENT FIELDS INTERSECT & INTERACT WITH HEALTH IN A NORTHERN CONTEXT

SASS 6001: ARCTIC & SUBARCTIC PEOPLES, PLACES, & IDENTITY

THREE-SEASON LAND-BASED WEEKEND INTENSIVE

HOW IDENTITY AND PLACE SHAPE PEOPLE IN ARCTIC & SUBARCTIC REGIONS

SASS 6002: INDIGENOUS & NORTHERN METHODOLOGIES

DISCUSS, EXAMINE, & EXPERIENCE INDIGENOUS METHODOLOGIES IN PLACE-BASED SETTINGS

PEOPLE HAVE BEEN SCIENTISTS ON THEIR OWN LANDS FOR A LONG TIME

SASS 6003: DEVELOPING RESEARCH PARTNERSHIPS IN ARCTIC & SUBARCTIC CONTEXTS

PRACTICAL, HANDS-ON RESEARCH PROPOSAL DEVELOPMENT

FOCUS ON RELATIONSHIP-BUILDING, RESEARCH ETHICS, & CONSENT

SASS 6004: ARCTIC & SUBARCTIC LEGAL TRADITIONS & ADVOCACY

THREE-SEASON LAND-BASED WEEKEND INTENSIVE

FOCUS ON INDIGENOUS LEGAL TRADITIONS AND VISIONS FOR SELF-DETERMINATION

PATHWAYS INCLUDE: MASTER'S, PHD, DIPLOMA, & CERTIFICATE OPTIONS

ANCHOR PROGRAM FOR SASS

INTERDISCIPLINARY LENS/FOCUS - WILL ATTRACT STUDENTS DOING DIVERSE TYPES OF RESEARCH

PROPOSAL IN DEVELOPMENT

WOULD NEED TO HAVE EVERYTHING APPROVED BY SENATE IN MAY FOR A FALL 2022 LAUNCH

POSSIBILITY OF SOFT LAUNCH IN WINTER 2023

JODIE LANE
NUNATSIAVUT GOVERNMENT

ENJOYED READING COURSE DESCRIPTIONS - NO CHANGES

IN LINE WITH WHAT PEOPLE HERE WANT

KNOWS A LOT OF PEOPLE WHO WOULD BE INTERESTED IN BEING PART OF FIRST COHORT (SELF INCLUDED)

KANANI DAVIS
INNU NATION

NO NEED TO RUSH: WINTER 2023 SOFT LAUNCH WOULD BE IDEAL

EXPECTING LOTS OF QUESTIONS FROM INNU NATION

ARN KEELING
GEOGRAPHY/SASS

THINK ABOUT WAYS OF VISUALIZING COURSE SEQUENCING

ECHOES ENTHUSIASM!

* ALEX WILL WORK ON A VISUAL MAP

LISA RANKIN
ARCHAEOLOGY/SASS

BE MINDFUL OF STAFF AND FACULTY CAPACITIES TO DELIVER

* WE WILL PUT TOGETHER A BRIEFING NOTE

ACADEMIC PROGRAMMING

DIPLOMA IN NORTHERN & INDIGENOUS CHILD & YOUTH CARE



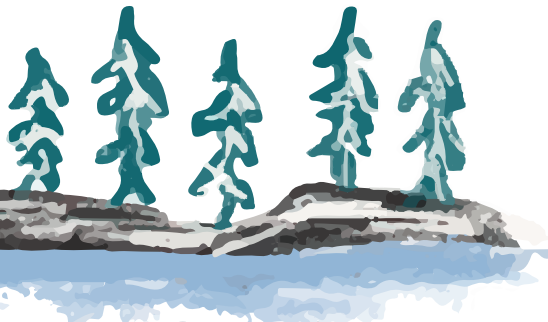
• AIM: PREPARE PEOPLE FOR DIRECT WORK WITH YOUNG PEOPLE & FAMILIES

• HEATHER MODLIN HAS BEEN PROMINENT IN THIS FIELD, IS HELPING TO LEAD DEVELOPMENT

• 12 COURSES TOTAL: EQUIVALENT OF 4 FULL-TIME SEMESTERS



INCLUDES THEORETICAL FOUNDATIONS & APPLICATION OF FOUNDATIONS



ACCESSIBLE & RELEVANT TO NORTHERN CONTEXTS

QUESTIONS ABOUT STRUCTURE & DEFINITION OF "FULL-TIME"

JODIE LANE
NUNATSIAVUT
GOVERNMENT

STUDENTS OFTEN HAVE MORE SUCCESS WITH REDUCED COURSE LOADS - DON'T WANT TO SET UP FOR FAILURE

* WE WILL MAP OUT DIFFERENT OPTIONS FOR PATHWAYS THROUGH THE PROGRAM



WILL BE APPEALING FOR PEOPLE BECAUSE IT IS CLOSE TO HOME

KANANI DAVIS
INNU NATION

QUESTIONS ABOUT REQUIREMENTS



AMY HUDSON
NUNATUKAVUT
COMMUNITY
COUNCIL

SUGGEST WE CIRCULATE A BRIEFING NOTE TO INDIGENOUS GOVERNMENTS FOR FEEDBACK



INTRODUCTIONS:

GARRY BEST

SENIOR LABRADOR ADVISOR,
SASS, LABRADOR CAMPUS

ORIGINALLY FROM MUD LAKE, RIGOLET,
& NORTH WEST RIVER AREAS



WORKED 16 YEARS WITH FEDERAL
GOVERNMENT, NOW TRANSITIONING
INTO RETIREMENT BY WORKING WITH
COMMUNITY-BASED ORGANIZATIONS



ENGINEERING WASN'T EASY, BUT WAS
ACHIEVABLE: LOOKING FORWARD TO
SUPPORTING HIGH SCHOOL AND
FIRST-YEAR STUDENTS IN LABRADOR



WORKING WITH ENGINEERING TO FIND
OPPORTUNITIES TO NORTHERNIZE &
INDIGENIZE CURRICULUM



SEES SIGNIFICANT OPPORTUNITIES FOR
ENGINEERING IN LABRADOR: INFUSING
LANGUAGE AND CULTURE INTO WHAT WE
LEARN AND HOW WE LEARN IT



*Garry will be reaching out individually to
Academic Council members to discuss priorities
in each of our respective areas*

* NEXT MEETING: FEBRUARY 22ND @ 10:00 AM AST